



Coleman Library

Florida A & M University
2018-2019 Fact Book

**General
Information**

Florida A&M University

2018-19 Facts in Brief

Founded on October 3, 1887
 Located in Tallahassee, FL 32307

Homepage Address

<http://www.famu.edu>

University Accreditation

Southern Association of Colleges and Schools (SACS)

Governing Boards

Florida Department of Education – State Board of Education
 Florida Board of Governors
 Florida A&M University Board of Trustees

Enrollment Statistics

Fall 2018 Enrollment 10,031

Demographics

Full-time	8,591
Part-time	1,440
Female	6,465
Male	3,566
Florida	8,606
Non-Florida	1,425

Black	8,248
White	796
Hispanic	441
Asian	104
Native Indian	2
Non-Resident Alien	94
Multiple Races	334
Native Hawaiian	5
No Race Reported	7

Undergraduate,	
Lower Division	3,720
Upper Division	4,004
Beginning Graduate	1,568
Advanced Graduate	291
Unclassified	448

Degrees Awarded 2017-18

Degree Type	Female	Male	Total
Bachelors	662	596	1,258
Masters	145	158	303
Doctoral	7	18	25
Professional	196	119	315
Specialist	0	0	0
Total	1,010	891	1,901

Instructional Faculty (Fall 2017)

Tenured	307	Non-Tenured, Tenure Earning	115	Non-Tenured, Not Earning	117	Total	539
---------	-----	-----------------------------	-----	--------------------------	-----	-------	-----

University Operating Budget

\$ 343,964,114



Mission and Vision Statement

VISION STATEMENT

Florida A & M University (FAMU) will be internationally recognized as a premier land grant and research institution committed to exemplary teaching, research, and service preparing transformational graduates with high ethical values dedicated to solving complex issues impacting our global society.

MISSION STATEMENT

Florida Agricultural and Mechanical University (FAMU) is an 1890 land-grant institution dedicated to the advancement of knowledge, resolution of complex issues and the empowerment of citizens and communities. The University provides a student-centered environment consistent with its core values. The faculty is committed to educating students at the undergraduate, graduate, doctoral and professional levels, preparing graduates to apply their knowledge, critical thinking skills and creativity in their service to society. FAMU's distinction as a doctoral/research institution will continue to provide mechanisms to address emerging issues through local and global partnerships. Expanding upon the University's land-grant status, it will enhance the lives of constituents through innovative research, engaging cooperative extension, and public service. While the University continues its historic mission of educating African Americans, FAMU embraces persons of all races, ethnic origins and nationalities as life-long members of the university community.

CORE VALUES

Florida Agricultural and Mechanical University holds the following values essential to the achievement of the University's mission:

- Scholarship
- Excellence
- Openness
- Fiscal Responsibility
- Accountability
- Collaboration
- Diversity
- Service
- Fairness
- Courage
- Integrity
- Respect
- Collegiality
- Freedom
- Ethics
- Shared Governance



Florida Agriculture and Mechanic University Strategic Plan 2017-2022

FAMU Rising

http://www.famu.edu/Strategic/FAMU%20Strategic%20Plan%202017-2022%20Final_reduced%20size.pdf

FLORIDA AGRICULTURAL AND MECHANICAL UNIVERSITY (FAMU) has entered a new and exciting phase in our evolution, providing us with an opportunity to evaluate and refine our priorities, while “Rising” to meet the challenges of an ever-changing higher education landscape and highly competitive global marketplace.

- **Global:** The global marketplace has changed dramatically in recent years through advances in technology and improvements in the quality of national higher education systems across the world. Universities must meet this challenge by producing graduates with the requisite skills and experiences to compete on a global scale.
- **National:** Across higher education, competition for high-achieving students has increased, the cost of a degree has steadily risen, and an increasing number of institutions are turning to alternative delivery models of instruction. Universities are also placing increasing focus on engagement and extracurricular education.
- **Florida:** Florida higher education has changed dramatically in the last several years, with an increased focus on accountability. Performance-based funding for public universities has transformed Florida higher education and focused state universities on data-driven outcomes.
- **HBCU:** HBCUs have encountered several challenges in recent years, with many institutions struggling to respond to the rising costs of educating students, changing requirements in need-based federal financial aid and increased competition for students. We have established bold, ambitious goals, with a focus on enhancing the quality of the student educational experience. Our vision is for FAMU to be recognized as a premier land-grant, doctoral research institution that produces globally competitive graduates. To aid us in achieving this vision, we have established six strategic priorities with corresponding goals that will enable collaborative, laser-focused execution of our Strategic Plan and elevate FAMU’s performance against both internal and external metrics.
 - **PREMIER:** As we continue to strengthen and grow our comprehensive academic program offerings, we strive to be among the leaders in the higher education community in providing quality high impact educational experiences for our students.
 - **1890 LAND-GRANT:** We will bolster our delivery and mix of academic programs and outreach initiatives related to agricultural and related disciplines.
 - **DOCTORAL RESEARCH:** Research is central to our mission and vision for the University, and we are committed to making our research enterprise a University-wide priority. We aspire to have the research footprint and impact of an internationally recognized doctoral-research university.
 - **GLOBAL IMPACT:** We seek to have an increased global impact through more direct student and faculty engagement with the international community, as well as indirect influence through the quality of our instructional and research programs.

FAMU STRATEGIC PLAN 6

These four key elements are at the core of FAMU’s mission and are reflected in the Strategic Priorities and Goals described in this document.

- **Strategic Priority 1:** Exceptional Student Experience - Student success. We will increase student success and improve the overall student experience by enhancing academic support services, strengthening our academic degree programs, enhancing our living-learning environment, and promoting innovative co-curricular activities.



• **Strategic Priority 2:** Excellent and Renowned Faculty – Faculty excellence. We will attract and retain world-class faculty, improve faculty incentives and invest in critical research facilities.

• **Strategic Priority 3:** High Impact Research, Commercialization, Outreach, and Extension Services – Research that makes a difference. We will refine our research priorities, expand our research productivity and commercialization footprint, and build upon our contributions in outreach and extension, as we continue to grow the University’s reputation as a doctoral-research university.

• **Strategic Priority 4:** Transformative Alumni, Community, and Business Engagement – Building and expanding our partnerships. We will increase engagement with our alumni base, business partners, and within our local, national and global communities to increase our impact and grow financial support for the University.

• **Strategic Priority 5:** First-Class Business Infrastructure – Business operations that support our mission. We will recruit and retain an excellent and diverse staff, enhance our administrative services, adopt a more transparent and effective budgeting model, and leverage technology to make our operations more effective and efficient.

• **Strategic Priority 6:** Outstanding Customer Experiences – Leadership through service. We will **consistently** provide high-quality customer experiences in all facets of University operations. These six Strategic Priorities will help FAMU transform in a strategic and focused manner over the next five years, ensuring all of the many initiatives we intend to implement drive us towards our singular aim: becoming a premier, land-grant, doctoral research institution that produces globally competitive graduates.



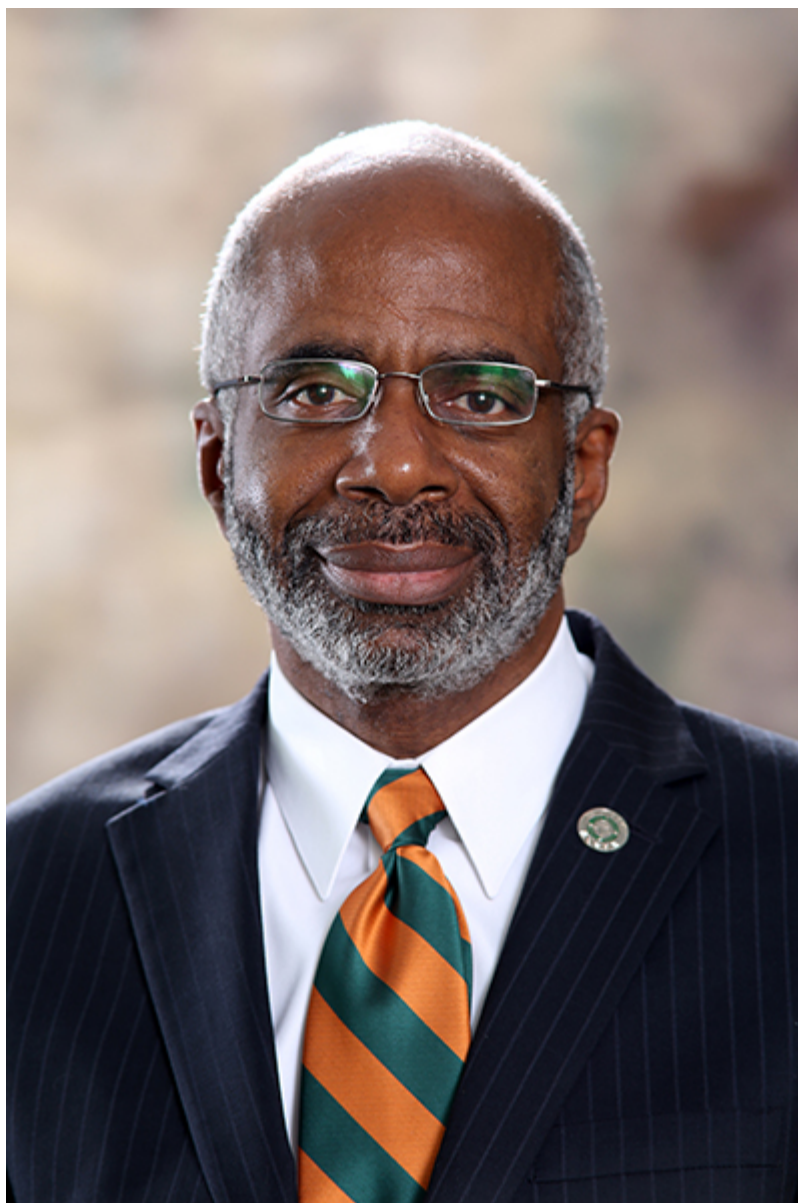
FAMU STRATEGIC PLAN KEY PERFORMANCE INDICATORS		
2017	METRIC	2022
83%	FTIC 2nd-year retention rate	88%
74.6%	Academic progress rate (2nd year retention with GPA above 2.0)	85%
18%	FTIC 4-year graduation rate	40%
40.7%	FTIC 6-year graduation rate	60%
28.3%	Percent of Bachelor's degrees without excess credit hours	60%
64.6%	Percent of Bachelor's graduates enrolled or employed full-time (earning salary of \$25,000+)	75%
\$32,700	Median wages of Bachelor's graduates employed full-time	\$38,000
\$12,640	Average cost to student	\$11,000
48%	Bachelor's degrees awarded in programs of strategic emphasis	55%
58.2%	Graduate degrees awarded in programs of strategic emphasis	65%
749	AA transfers headcount enrollment	1,100
2,279	Number of degrees awarded	2,500
20	Number of research doctorates awarded	30
9,614	Fall headcount enrollment	12,000
3	Number of patents	6
\$45.4M	Total R&D expenditures	\$50M
\$6.4M	Annual giving	\$15M
\$115.6M	Endowment value	\$155M

ALIGNMENT OF FAMU STRATEGIC PLAN WITH FLORIDA BOG 2025 SYSTEM STRATEGIC PLAN			
FAMU STRATEGIC PLAN STRATEGIC PRIORITIES	BOARD OF GOVERNORS SUS STRATEGIC PLAN GOALS		
	TEACHING AND LEARNING	SCHOLARSHIP, RESEARCH AND INNOVATION	COMMUNITY AND BUSINESS ENGAGEMENT
PRIORITY 1: Exceptional Student Experience	X	X	X
PRIORITY 2: Excellent and Renowned Faculty	X	X	X
PRIORITY 3: High Impact Research, Commercialization, and Public Service	X	X	X
PRIORITY 4: Transformative Alumni, Community, and Business Engagement		X	X
PRIORITY 5: First Class Business Infrastructure	X	X	X
PRIORITY 6: Outstanding Customer Experiences	X	X	X



University Presidents

**Dr. Larry Robinson, President
Florida Agricultural and Mechanical University**

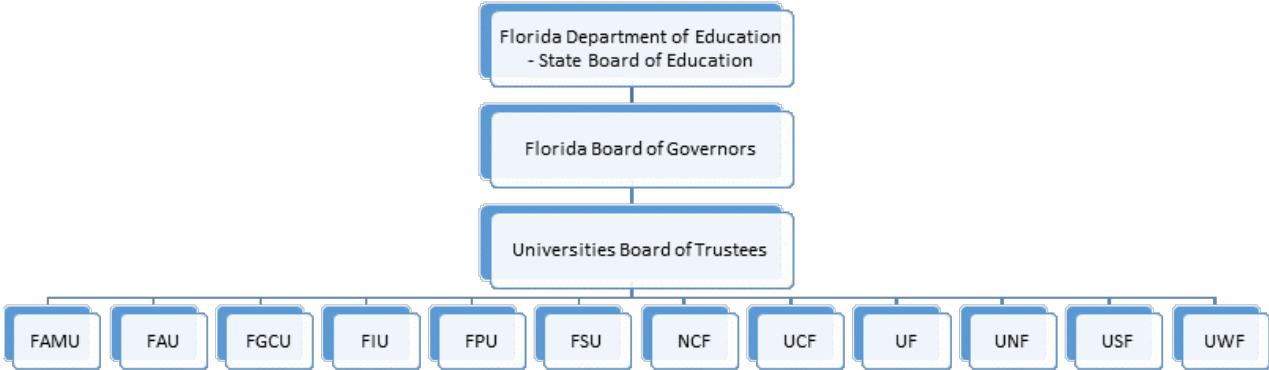


University Presidents List

1887-1901	Dr. Thomas DeSaille Tucker
1901-1923	Dr. Nathan B. Young
1923-1924	Dr. W.H.A. Howard
1924-1944	Dr. John Robert Edward Lee, Sr.
1944	Dr. J.B. Bragg
1944-1949	Dr. William H. Gray, Jr.
1950-1968	Dr. George W. Gore, Jr.
1968-1977	Dr. Benjamin L. Perry, Jr.
1977-1985	Dr. Walter L. Smith
1985-2001	Dr. Frederick S. Humphries
2001-2002	Dr. Henry Lewis - Interim
2002-2004	Dr. Fred Gainous
2005-2007	Dr. Castell Bryant - Interim
2007-June 2012	Dr. James H. Ammons
July 2012 -March 2014	Dr. Larry Robinson - Interim
April 2014 - September 2016	Dr. Elmira Mangum
September 2016 - November 2017	Dr. Larry Robinson - Interim
November 2017 - Present	Dr. Larry Robinson



Florida Board of Governors Organizational Structure



Florida Board of Governors Members

The Board of Governors is comprised of seventeen members, fourteen of whom are appointed by the Florida Governor and confirmed by the Florida Senate for a term of seven years. The remaining members include the Chair of the Advisory Council of Faculty Senates, the Commissioner of Education, and the Chair of the Florida Student Association. The Board oversees the operation and management of the Florida public university system's twelve institutions (On April 20, 2012 legislation was signed that immediately created Florida Polytechnic University as a new institution in the State University System of Florida).



Florida A&M University Board of Trustees

<http://www.famu.edu/index.cfm?BOT&TrusteeDirectory>

Kelvin Lawson (Chair)
Jacksonville, Florida

Kimberly Moore (Vice Chair)
Tallahassee, Florida

Matthew M. Carter II
Tallahassee, Florida

Thomas W. Dortch, Jr.
Atlanta, Georgia

Bettye A. Grable
Tallahassee, Florida

David Lawrence Jr.
Miami, Florida

Harold Mills
Orlando, Florida

Rochard Moricette
Tallahassee, FL

Belvin Perry, Jr.
Orlando, Florida

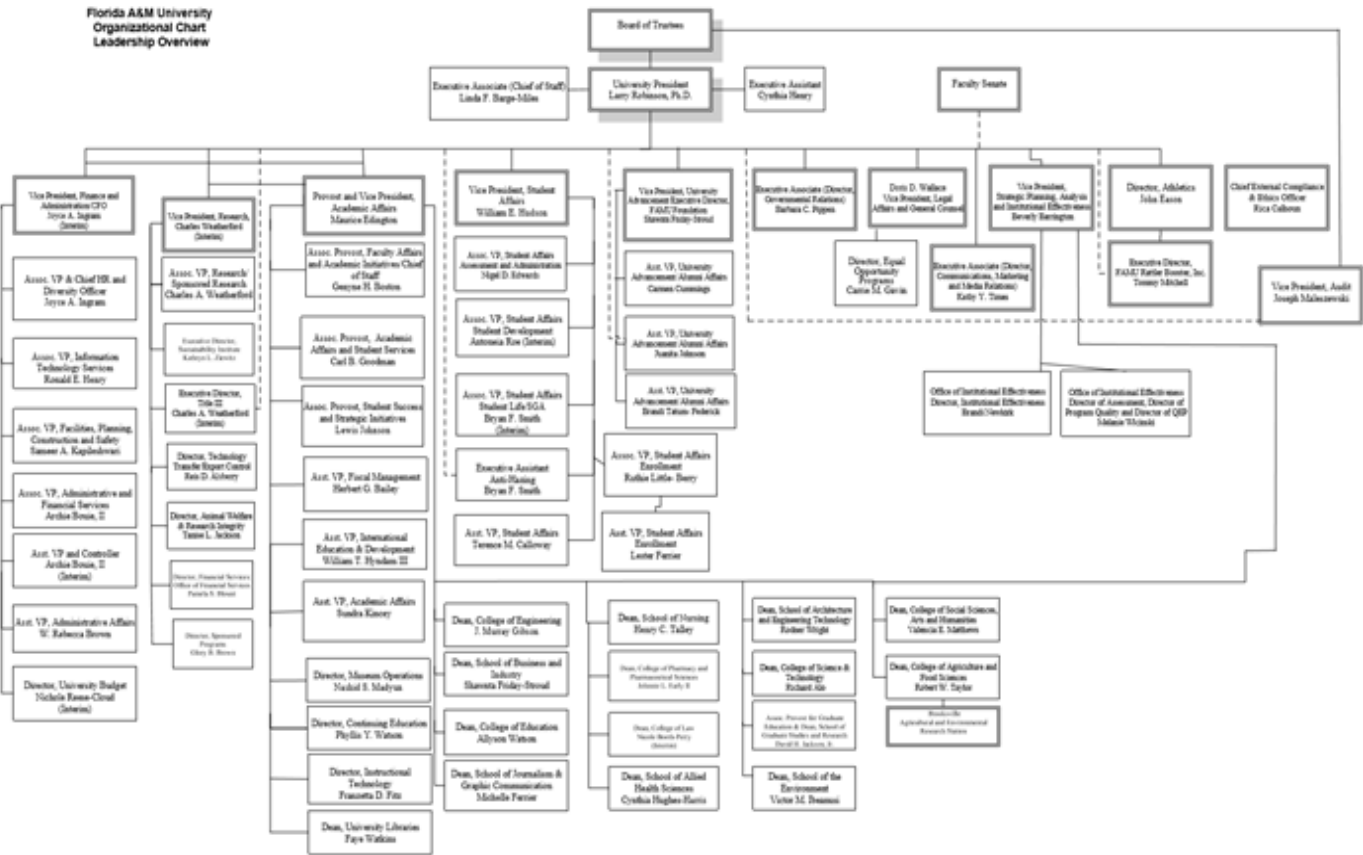
Craig Reed
Cleveland/Akron, Ohio

Nicole Washington
Miami, Florida

Robert L. Woody
Gainesville, Florida



University Organizational Structure



Updated 7/1/19

Executive Leadership

President	Larry Robinson
Provost/Vice President Academic Affairs	Maurice D. Edgington
Special Assistant to the President/Board Liaison	Linda F. Barge-Miles
Vice President, Finance & Administration/CFO (Interim)	Joyce Ingram
Vice President, Student Affairs	William E. Hudson, Jr.
Vice President, University Advancement	Shawnta Friday-Stroud
Vice President, Audit/Compliance	Joseph Maleszewski
Vice President, Research (Interim)	Charles A. Weatherford
Vice President, Strategic Planning, Analysis and Institutional Effectiveness	Beverly Barrington
Vice President for Legal Affairs and General Counsel	Denise Wallace
Director, Governmental Relations	Barbara C. Pippin
Executive Associate Director, Communications	Kathy Y. Times
Director, Athletics	John Eason
Executive Director, Title III Programs (Interim)	Charles A. Weatherford
Executive Assistant	Cynthia Henry



Deans and Directors (Academic Affairs)

Dean, School of Allied Health Sciences	Dr. Cynthia Hughes Harris
Dean, School of Architecture	Rodner Wright
Dean, College of Social Sciences, Arts, and Humanities	Dr. Valencia Matthews
Dean, College of Science and Technology	Dr. Richard Alo
Dean, College of Agriculture and Food Sciences	Dr. Robert Taylor
Dean, College of Education	Dr. Allyson L. Watson
Dean, FAMU-FSU College of Engineering	Dr. J. Murray Gibson
Dean, School of Graduate Studies and Research	Dr. David H. Jackson Jr.
Dean, School of Business and Industry	Dr. Shawnta Friday-Stroud
Dean, School of Journalism and Graphic Communication	Dr. Michelle Ferrier
Dean, College of Law- Interim	Nicky Boothe-Perry
Dean, School of Nursing	Dr. Henry Talley
Dean, College of Pharmacy and Pharmaceutical Sciences - Interim	Dr. Johnnie L. Early, II
Dean, School of the Environment	Dr. Victor Ibeanusi
Dean, University Libraries	Dr. Faye Watkins
Director, Continuing Education	Mrs. Phyllis Watson
President, Faculty Senate	Dr. Bettye Grable



Program Accreditations

<http://www.famu.edu/OfficeofInstitutionalEffectiveness/UserFiles/File/FAMU%20Specialized%20Accrediting%20Agencies%20and%20Degree%20Programs%2012%2001%2016%20FAMU%20Accredited%20Agencies%20and%20De.pdf>

Institutional Accreditation

Southern Association of Colleges & Schools

Schools/Colleges Accreditations

<u>College/School</u>	<u>Program</u>	<u>Accrediting Agency</u>
Allied Health	Healthcare Management	Association of University Programs in Health Administration (AUPHA)
	Health Informatics And Information Management	Comm. on Accreditation for Health Informatics and Information Mgmt. (CAHIIM)
	Cardiopulmonary Sciences	Commission on Accreditation of Respiratory Care (CoARC)
	Occupational Therapy	American Occupational Therapy Association (AOTA)
	Physical Therapy (DPT)	American Physical Therapy Association (APTA)
Architecture	Architecture (B. Arch, M. Arch)	National Architecture Accrediting Board (NAAB)
	Construction Eng. Tech	
	Electronics Eng. Tech	Accrediting Board of Engineering and Technology (ABET)
College of Science & Technology	Chemistry (BS)	American Chemical Society (ACS)
	Computer & Info Sciences	Accrediting Board of Engineering and Technology (ABET)
College of Social Sciences, Arts, and Humanities	Social Work (BSW, MSW)	Council on Social Work Education (CSWE)
School of Business and Industry	Facilities Management Major w/I existing BS Business Administration	International Facilities Management Association (IFMA)



Program Accreditations (cont.)

Institutional Accreditation

Southern Association of Colleges & Schools

Schools/Colleges Accreditations

<u>College/School</u>	<u>Program</u>	<u>Accrediting Agency</u>
Agriculture & Food Sciences	Biological and Systems Engineering (BASE)	Accrediting Board of Engineering and Technology (ABET)
Education	Educational Leadership (M, D) Early Childhood Education (B) Counselor Education (M)	National Association of Colleges of Teacher Education (NCATE)
	Vocational and Industrial Education (B, M)	Florida Department of Education (FDOE)
	Elementary Education w/ESOL Endorsement (B, M)	
	English Teacher Education (B)	
	Mathematics Teacher Education (B)	
	Music Teacher Education (B)	
	School Psychology (M)	
	Science Teacher Education (B) (Biology, Chemistry, Physics)	
	Social Science Education (B) (History, Political Sciences)	
	Physical Education (B)	



Program Accreditations (cont.)

Institutional Accreditation Southern Association of Colleges & Schools

Schools/Colleges Accreditations

<u>College/School</u>	<u>Program</u>	<u>Accrediting Agency</u>
Nursing	Nursing (BSN, MSN)	National League for Nursing Accrediting Commission, Inc. (NLNAC)/Florida Board of Nursing (FBON)
Pharmacy	Pharm D	American Council on Pharmacy Education (ACPE)
	Public Health (MPH/DRPH)	Council on Education for Public Health (CEPH)
SJMGC	Journalism (BS)	Accrediting Council on Education In Journalism and Mass Communications (ACEJMC)
	Public Relations (BS)	
FAMU/FSU Engineering	Chemical Engineering (B)	Accrediting Board of Engineering and Technology (ABET)
	Civil Engineering (B)	
	Computer Engineering (B)	
	Electrical Engineering (B)	
	Industrial/Manufacturing Engineering (B)	
	Mechanical Engineering (B)	
College of Law	Juris Doctor	American Bar Association (ABA) The law school was granted full accreditation on July 30, 2009

Legend:

Pharmacy = College of Pharmacy and Pharmaceutical Sciences

Engineering = FAMU/FSU College of Engineering

SBI = School of Business and Industry

SJMGC = School of Journalism and Graphic Communication



Institutes and Centers

http://www.famu.edu/index.cfm?DOR_division_of_research&InstitutesandCenters

Center for Biological Control

Director: Dr. Lambert Kanga

Center for Disability Access and Resources

Director: Dr. Danette G. Saylor

Center for Environmental Equity and Justice

Director: Dr. Michael Abazinge

Environmental Cooperative Sciences Center (ECSC)

Director: Dr. Michael Abazinge

Center for Intelligent Systems, Control, and Robotics (CISCOR)

Director: Dr. Emmanuel G. Collins

Center for International Agricultural Trade, Development Research and Training

Director: Ms. Harriett A. Paul

Center for International Law and Justice

Director: Professor Randall Abate

Center for Plasma Science and Technology

Director: Dr. Charles Weatherford

Center for Viticulture Science and Small Fruit Research

Director: Dr. Stephen Leong

Center for Water and Air Quality

Director: Dr. Cassel Gardner

Center for Secure Computing and Information Assistance

Director: Ms. Christy Chatmon

Meek-Eaton Southeastern Regional Black Archives Research Center and Museum

Director: Ms. Elizabeth Dawson

Small Business Development Center

Director: Mr. Keith Bowers

Institute for Building Sciences

Director: Professor Thomas D. Pugh

Juvenile Justice Research Institute

Director: Dr. Gregory J. Harris

Institute for Research in Music and Entertainment Industry Studies

Director: Dr. Kawachi Clemons

Institute of Public Health

Director: Dr. Cynthia M. Harris

National Alumni Association Executive Board

<http://famunaa.org/page/ExecBoard>

President LTC Gregory Clark	First Vice President Dr. James Moran	Second Vice President Patricia A Shaw
Third Vice President Mary H. Smith	Recording Secretary Angelia Williams	Treasurer Lanette R. Jones
Financial Secretary Karla Johnson Harris	Corresponding Secretary Artisha R. Polk	Florida Regional VP William Youman, III
Southern Regional VP Yolanda Pinkard	Northeast Regional VP Artisha R. Polk	Midwest Regional VP Guy Schley
Farwest Regional VP Van L. Russ	Florida Region Member-at-Large Floyd Hill	Southern Region Member-at-Large Xavier Durden
Northeast Region Member-at-Large BG (Ret.) Leroy C. Bell	Midwest Region Member-at-Large Eleanor Carter	Farwest Region Member-at-Large Nanette Williams
General Counsel Reginald J. Mitchell, Esq.	Parliamentarian Howard Burton	Sergeant-at-Arms Curtis E. Johnson, Jr.
Publicity Director C. Denise Hendricks	Chaplain Keith L. Shannon	FAMU President's Designee TBD
FAMU BOT Chairman's Designee Robert Woody	FAMU SGA President Rochard Moricette	FAMU Student NAA President TBD
NAA Immediate Past President Tommy Mitchell, Sr.	FAMU OAA Senior Executive Director Carmen Cummings-Martin	



University Foundation

The Florida A&M University Foundation, Inc. has a 20+ member Board of Directors. The Board of Directors consists of a loyal and dedicated group of supporters. Members of the Board of Directors are committed to the University and the mandate to the Foundation to manage and monitor funds, property, and other gifts to the University.

<http://advancement.famu.edu/images/doc/FoundationBoardRoster.pdf>

FAMU Foundation Board of Directors		
(*denotes ex-officio member)		
Officers		
Chair Jemal O. Gibson Regional Director of Sales Mayo Clinic Laboratories	Vice Chair Lisa R. LaBoo President/Owner Financial Consultant & Real Estate Investor	Treasurer *VACANT VP, Finance and Administration/CFO, FAMU
Secretary Alfreda D. Blackshear, MD Former Pediatrician/Owner Alfreda D. Blackshear Pediatrics	Board of Trustee Liaison *Belvin Perry, Jr., Esq. Morgan & Morgan, P.A.	University President *Larry Robinson, Ph.D. Florida A&M University
	Executive Director, FAMU Foundation *Shawnta Friday-Stroud, Ph.D. Dean, School of Business & Industry Vice President, University Advancement	
Board Members		
Chan Bryant Abney, Esq. Gen. Counsel & Director of HR Gary, Williams, Parenti, Watson, & Gary P.L.L.C.	Marcella Freeman SVP, Capital Devs. & Inv. Relations EIG Global Energy Partners	Lenetra S. King VP & Professional Services Officer Texas Health Harris Methodist Hospital
Elaine E. Armster Chief Sustainability Officer Managing Partner Linkscape360, LLC	Clifton A. Goins, IV SVP, Head of Strategy Asset Management Northern Trust Asset Management	*Carmen Cummings Martin Senior Executive Director Univ. Engagement/Alumni Affairs
William J. Bryant, D.D.S., Sc.D. Orthodontist Orthodontics & TMJ Center of Stuart	John L. Green, J.D., Ph.D., C.P.A. Owner John L. Green, CPA, Atty. At Law	Kenneth M. Neighbors Partner McGuireWoods LLP
*COL Gregory L. Clark President FAMU National Alumni Association	*Taylor Hall University Student Designee Florida A&M University	Akunna Olumba, Esq. LL.M Chief Consultant The Tax Consultant
Keith Clinkscales CEO First World Media, LLC	Monica Williams Harris Of Counsel/Attorney Jackson Lewis P.C.	*Phyllis Taitte Professor of Law FAMU College of Law University Faculty Designee Florida A&M University
Hosetta B. Coleman, SPHR Senior VP of HR Fifth Third Bank (Tampa Bay Affiliate)	Erica D. Hill Managing Director, Supply Chain Enterprise Facilities Management CBRE	G. Scott Uzzell CEO Converse, Inc. A Subsidiary of Nike, Inc.
Lorin J. Crenshaw VP, Finance, Lithium & Advanced Materials Albemarle Corporation	Laurence A. Humphries Manager, Planning & Performance Angola LNG OPCO Chevron Corporation	Twanna Munroe Ward Global Business Services VP Contract to Cash - The Americas Discovery
John Crossman CEO Crossman & Company	Thomas Jones, Jr. Partner McConnell & Jones CPAs	Tirrell D. Whitley CEO-Principal Liquid Soul
Emeritus Board Members		
COL (Ret.) Brodes Hartley, Jr. Betty Holzendorf	Milton Jones, Jr. Cecil B. Keene (Posthumous)	Harold Martin, MD Joseph Webster, Sr., MD



University Foundation (cont.)

Emeritus Board Members

COL (Ret.) Brodes H. Hartley, Jr.
Betty Holzendorf

Milton L. Jones, Jr.
Cecil B. Keene (*Posthumous*)

Harold L. Martin, MD
Joseph L. Webster, Sr., MD

Updated 1/9/2018

