



*Florida A & M University*  
*2015-2016 Fact Book*

**Student  
Enrollment**



# Tuition and Fees 2015-2016

Fees Per Credit Hour	Undergraduate		Graduate		Law	
	Resident	Non-Resident	Resident	Non-Resident	Resident	Non-Resident
Tuition	\$105.07	\$105.07	\$334.13	\$334.13	\$379.76	\$379.76
Student Financial Aid Fee	\$5.16	\$5.16	\$16.70	\$16.70	\$18.98	\$18.98
Cap Improvement Fee	\$6.76	\$6.76	\$6.76	\$6.76	\$6.76	\$6.76
Athletic Fee	\$13.97	\$13.97	\$13.97	\$13.97	\$13.97	\$13.97
Activity and Service Fee	\$10.05	\$10.50	\$10.50	\$10.50	\$10.50	\$10.50
Technology Fee	\$5.16	\$5.16	\$16.70	\$16.70	\$18.98	\$18.98
Health Fee	\$6.91	\$6.91	\$6.91	\$6.91	\$6.91	\$6.91
<b>Non-Residents shall be assessed the following two additional fees:</b>						
Non- Resident Fee		\$379.07		\$587.02		\$611.46
Non-Resident Financial Aid Fee		\$18.95		\$29.35		\$30.57
<b>Total Fees Per Credit Hour</b>	<b>\$151.78</b>	<b>\$549.80</b>	<b>\$405.67</b>	<b>\$1,022.04</b>	<b>\$455.86</b>	<b>\$1,097.89</b>

## Other Required Fees

### Materials and Supply Fees

\$15.00 – \$300.00 (per applicable course)

### Orientation Fee

\$35.00 Students who are enrolled for the first time

### Late Registration Fee

\$100.00

### Late Payment Fee

\$100.00

### ID Card

\$5.00 per semester (Not charged in Summer)

### Repeat Course Surcharge

\$177.94 per credit hour for regular courses taken more than twice

### Transportation and Access Fee

\$65.00 for Fall Semester and \$65.00 for Spring Semester

\$33.00 for Summer Semester

### Materials and Supply Fees

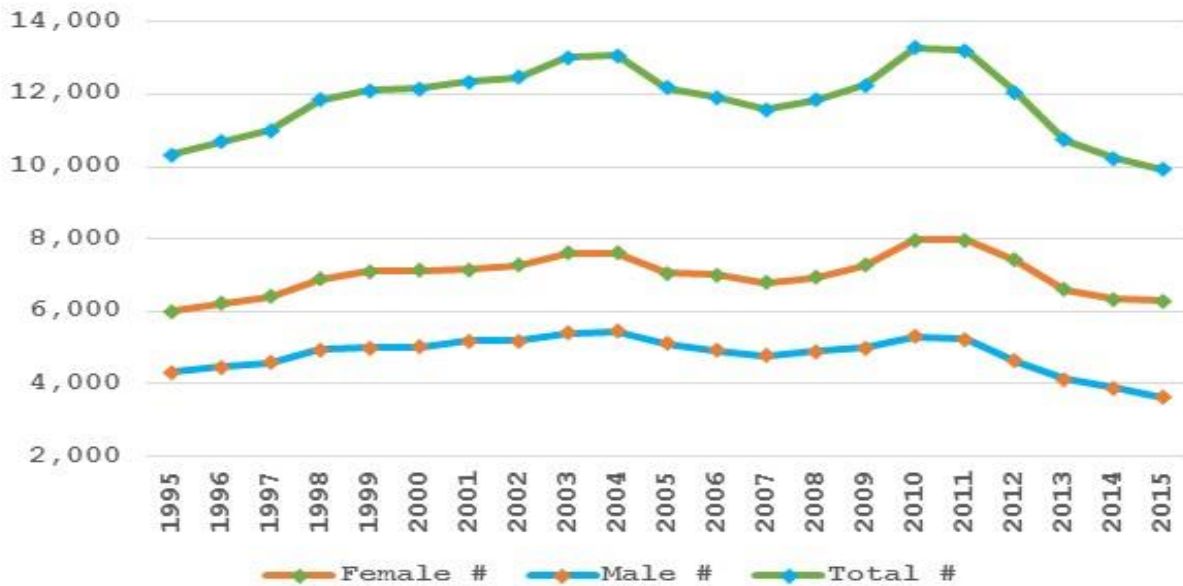
\$15.00 – \$300.00 (per applicable course)

### Differential Fee

Undergraduate students whose date of enrollment was on or after July 1, 2007 will be assessed an additional tuition differential of \$36.38 per credit hour



## Historical Enrollment by Gender Fall Semesters 1995 – 2015



Year	Female		Male		Total
	#	%	#	%	#
Fall 1995	6,009	58.15%	4,325	41.85%	10,334
Fall 1996	6,228	58.22%	4,469	41.78%	10,697
Fall 1997	6,408	58.27%	4,590	41.73%	10,998
Fall 1998	6,895	58.25%	4,942	41.75%	11,837
Fall 1999	7,097	58.65%	5,003	41.35%	12,100
Fall 2000	7,135	58.67%	5,026	41.33%	12,161
Fall 2001	7,166	58.03%	5,183	41.97%	12,349
Fall 2002	7,273	58.33%	5,195	41.67%	12,468
Fall 2003	7,620	58.51%	5,403	41.49%	13,023
Fall 2004	7,618	58.29%	5,449	41.69%	13,070
Fall 2005	7,070	58.06%	5,104	41.92%	12,177
Fall 2006	7,001	58.77%	4,909	41.21%	11,913
Fall 2007	6,783	58.64%	4,784	41.36%	11,567
Fall 2008	6,940	58.58%	4,908	41.42%	11,848
Fall 2009	7,279	59.37%	4,982	40.63%	12,261
Fall 2010	7,964	59.98%	5,313	40.02%	13,277
Fall 2011	7,973	60.37%	5,234	39.63%	13,207
Fall 2012	7,419	61.56%	4,632	38.44%	12,051
Fall 2013	6,604	61.50%	4,134	38.50%	10,738
Fall 2014	6,346	62.02%	3,887	37.98%	10,233
Fall 2015	6,297	63.48%	3,623	36.52%	9,920



# Student Enrollment by School/College/Major/Gender Fall 2015

## College of Agriculture and Food Sciences

	Female		Male		Total
	#	%	#	%	#
31101 Agri-Business	9	29.03%	22	70.97%	31
31201 Agricultural Science	2	33.33%	4	66.67%	6
31202 Animal Science	59	83.10%	12	16.90%	71
31204 Agronomy	3	25.00%	9	75.00%	12
31205 Ent & Strctl Pest Control	2	100.0%	0	0.00%	2
31207 Food Science	26	78.79%	7	21.21%	33
31208 Veterinary Technology	10	71.43%	4	28.57%	14
31282 Agricultural Science Grad	0	0.00%	1	100.0%	1
31284 Agribusiness	1	33.33%	2	66.67%	3
31286 Entomology	6	66.67%	3	33.33%	9
31287 Plant Sciences	2	40.00%	3	60.00%	5
31288 MS in Agr Science (Non Thesis)	1	50.00%	1	50.00%	2
31291 Entomology Doctoral	1	50.00%	1	50.00%	2
31481 Soil and Water	0	0.00%	1	100.0%	1
31600 Pre-Bio & Agric Sys Engineerng	2	66.67%	1	33.33%	3
31601 Bio & Agric Sys Engineering	10	62.50%	6	37.50%	16
<b>Total</b>	<b>134</b>	<b>63.51%</b>	<b>77</b>	<b>36.49%</b>	<b>211</b>

## College of Education

	Female		Male		Total
	#	%	#	%	#
11100 Pre-Music Teacher Education	11	28.95%	27	71.05%	38
11103 MusicTchr Ed:Instr-Wind,Piano	3	25.00%	9	75.00%	12
11181 Educational Leadership	5	55.56%	4	44.44%	9
11182 Counselor Education	22	84.62%	4	15.38%	26
11191 Educational Leadership-Doctora	44	69.84%	19	30.16%	63
11281 Curriculum and Instruction	6	66.67%	3	33.33%	9
12000 Pre-Elementary Edu	58	90.63%	6	9.38%	64
12100 Pre-Early Childhood Edu	12	100.0%	0	0.00%	12
12101 Elementary Education	34	80.95%	8	19.05%	42
12102 Pre-Kind/Primary Edu	8	100.0%	0	0.00%	8
13100 Pre-English Education	15	83.33%	3	16.67%	18
13102 English Education	3	60.00%	2	40.00%	5
14000 Pre-Science Edu/Biology	1	100.0%	0	0.00%	1
14100 Pre-Physical Education	2	11.11%	16	88.89%	18
14101 Physical Education	1	25.00%	3	75.00%	4
14102 Health,Leisure & FitnessStudies	5	14.29%	30	85.71%	35
14104 Biology Education	1	100.0%	0	0.00%	1
14200 Pre-Science Edu/Chemistry	2	100.0%	0	0.00%	2



## Student Enrollment by School/College/Major/Gender Fall 2015

### College of Education (cont)

	Female		Male		Total
	#	%	#	%	#
14281 Sport Management Grad	4	28.57%	10	71.43%	14
14300 Pre-Mathematics Education	6	60.00%	4	40.00%	10
14302 Mathematics Education	3	75.00%	1	25.00%	4
15200 Pre-History Education	8	57.14%	6	42.86%	14
15202 History Education	1	50.00%	1	50.00%	2
15300 Pre-Political Science Educ	1	50.00%	1	50.00%	2
15304 Political Science Education	3	100.0%	0	0.00%	3
<b>Total</b>	<b>259</b>	<b>62.26%</b>	<b>157</b>	<b>37.74%</b>	<b>416</b>

### College of Engineering

	Female		Male		Total
	#	%	#	%	#
41100 Pre-Engr Civil/Env	12	36.36%	21	63.64%	33
41101 Civil Engineering	3	21.43%	11	78.57%	14
41102 Environmental Engineering	0	0.00%	1	100.0%	1
41191 Civil Engineering - Doctoral	5	71.43%	2	28.57%	7
42100 Pre-Engr Electrical	4	13.79%	25	86.21%	29
42101 Electrical Engineering	1	5.88%	16	94.12%	17
42102 Computer Engineering	5	26.32%	14	73.68%	19
42181 Electrical Engineering Grad	0	0.00%	5	100.0%	5
42191 Electrical Engineering Doctor	1	20.00%	4	80.00%	5
42200 Pre-Engr Computer Eng	13	29.55%	31	70.45%	44
44100 Pre-Engr Chem/BioMed	15	60.00%	10	40.00%	25
44101 Chemical Engineering	6	54.55%	5	45.45%	11
44104 Chem Engr-Engineering Material	1	100.0%	0	0.00%	1
44105 Chem Engr -Biomedical Engineer	4	40.00%	6	60.00%	10
44181 Chemical Engineering Grad	0	0.00%	2	100.0%	2
44191 Chemical Engineering-Doctoral	0	0.00%	2	100.0%	2
44192 Biomedical Engineering-Doctora	1	100.0%	0	0.00%	1
45100 Pre-Engr Mechanical Engr	11	21.15%	41	78.85%	52
45101 Mechanical Engineering	5	21.74%	18	78.26%	23
45181 Mechanical Engineering Grad	0	0.00%	3	100.0%	3
45191 Mechanical Engineering-Doctora	2	40.00%	3	60.00%	5
46100 Pre-Engr Industrial Engr	1	20.00%	4	80.00%	5
46101 Industrial Engineering	3	25.00%	9	75.00%	12
46181 Industrial Engineering Grad	1	50.00%	1	50.00%	2
46191 Industrial Engineering-Doctora	2	40.00%	3	60.00%	5
<b>Total</b>	<b>96</b>	<b>28.83%</b>	<b>237</b>	<b>71.17%</b>	<b>333</b>



# Student Enrollment by School/College/Major/Gender Fall 2015

## College of Law

	Female		Male		Total
	#	%	#	%	#
E1171 JURIS DOCTOR	181	57.10%	136	42.90%	317
E1172 Law Professional 2	80	55.56%	64	44.44%	144
<b>Total</b>	<b>261</b>	<b>56.62%</b>	<b>200</b>	<b>43.38%</b>	<b>461</b>

## College of Pharmacy and Pharmaceutical Sciences

	Female		Male		Total
	#	%	#	%	#
B1171 Pharmacy Professional	685	71.13%	278	28.87%	963
B1181 Pharmaceutical Science	3	60.00%	2	40.00%	5
B1182 Public Health	56	76.71%	17	23.29%	73
B1191 Pharmaceutical Sci - Doctoral	28	70.00%	12	30.00%	40
B1192 Public Health Doctoral	22	75.86%	7	24.14%	29
<b>Total</b>	<b>794</b>	<b>71.53%</b>	<b>316</b>	<b>28.47%</b>	<b>1,110</b>

## College of Science and Technology

	Female		Male		Total
	#	%	#	%	#
A4101 Biology	226	74.83%	76	25.17%	302
A4102 Biology Pre-Professional	38	76.00%	12	24.00%	50
A4103 Pre-Medicine	177	77.97%	50	22.03%	227
A4105 Molecular Cellular Biology	11	78.57%	3	21.43%	14
A4181 Molecular Cellular Biology	2	40.00%	3	60.00%	5
A4183 Physiology	2	100.0%	0	0.00%	2
A4185 Biological Sciences -NonThesi	1	50.00%	1	50.00%	2
A4201 Chemistry	31	68.89%	14	31.11%	45
A4203 Chem Pre-med/Dent	23	65.71%	12	34.29%	35
A4204 Biochemistry	5	62.50%	3	37.50%	8
A4281 Chemistry - Grad	3	50.00%	3	50.00%	6
A4301 Mathematical Sciences	4	44.44%	5	55.56%	9
A4303 Mathematics	6	54.55%	5	45.45%	11
A4304 Actuarial Science	5	62.50%	3	37.50%	8
A4401 Physics	1	11.11%	8	88.89%	9
A4481 Physics Grad	1	100.0%	0	0.00%	1
A4491 Physics-Doctoral	3	30.00%	7	70.00%	10
A8100 Pre-Computer Info Systems	3	25.00%	9	75.00%	12
A8102 Computer Information Systems	17	27.87%	44	72.13%	61
A8103 Computer Science	20	39.22%	31	60.78%	51
A8104 Information Technology	29	24.37%	90	75.63%	119
A8181 Software Engineering Science	1	33.33%	2	66.67%	3
A8182 Computer Science	2	22.22%	7	77.78%	9
<b>Total</b>	<b>611</b>	<b>61.16%</b>	<b>388</b>	<b>38.84%</b>	<b>999</b>



# Student Enrollment by School/College/Major/Gender Fall 2015

## College of Social Sciences, Arts and Humanities

	Female		Male		Total
	#	%	#	%	#
21101 Music - General	13	32.50%	27	67.50%	40
21105 Music - ConcentrationJazz Stud	1	33.33%	2	66.67%	3
21106 Music Industry	16	29.63%	38	70.37%	54
22101 Philosophy & Religion	2	20.00%	8	80.00%	10
22102 Philosophy	4	100.0%	0	0.00%	4
22201 Theatre	41	66.13%	21	33.87%	62
22301 Fine Arts	17	77.27%	5	22.73%	22
23100 English	1	50.00%	1	50.00%	2
23101 English	36	80.00%	9	20.00%	45
25101 HISTORY	12	36.36%	21	63.64%	33
25103 African-American Studies	9	75.00%	3	25.00%	12
25301 Political Science	109	65.27%	58	34.73%	167
25303 Political Sci/Publ Admin Conc	14	66.67%	7	33.33%	21
26101 Psychology	257	74.49%	88	25.51%	345
26181 Community Psychology	28	82.35%	6	17.65%	34
27100 Pre-Social Work	54	83.08%	11	16.92%	65
27101 Criminal Justice	287	59.92%	192	40.08%	479
27102 Social Work	106	88.33%	14	11.67%	120
27103 Sociology	55	62.50%	33	37.50%	88
27183 Political Science - Grad	4	44.44%	5	55.56%	9
27186 Social Work Grad	34	87.18%	5	12.82%	39
27187 Public Administration Grad	16	61.54%	10	38.46%	26
27188 History - Grad	4	44.44%	5	55.56%	9
27189 Criminal Justics - Grad	16	72.73%	6	27.27%	22
29101 Interdisciplinary Studies	126	57.53%	93	42.47%	219
<b>Total</b>	<b>1,262</b>	<b>65.39%</b>	<b>668</b>	<b>34.61%</b>	<b>1,930</b>

## School of Allied Health Sciences

	Female		Male		Total
	#	%	#	%	#
C0100 Pre-Health Care	104	80.00%	26	20.00%	130
C0200 Pre-Health Information Mgmt	13	81.25%	3	18.75%	16
C0400 Pre-Cardiopumony Science	35	81.40%	8	18.60%	43
C1101 Health Care Management	91	77.78%	26	22.22%	117
C1181 Health Care Administration	11	84.62%	2	15.38%	13
C2101 Hlth Informatics & Info Mgmt	54	91.53%	5	8.47%	59
C3191 Doctor of Physical Therapy	55	63.95%	31	36.05%	86
C4101 Cardiopulmonary Science	41	82.00%	9	18.00%	50
C5181 Occupational Therapy Grad	51	86.44%	8	13.56%	59
C6101 Health Sci - Pre-Physical Ther	278	64.35%	154	35.65%	432
C6102 Health Science-PreOccupTherapy	251	83.39%	50	16.61%	301
<b>Total</b>	<b>984</b>	<b>75.34%</b>	<b>322</b>	<b>24.66%</b>	<b>1,306</b>





# Student Enrollment by School/College/Major/Gender Fall 2015

## School of Architecture

	Female		Male		Total
	#	%	#	%	#
70100 Pre-Architecture	13	31.71%	28	68.29%	41
71101 Architectural Studies	16	37.21%	27	62.79%	43
71171 Architecture: 1st P	4	57.14%	3	42.86%	7
71181 Architecture - Grad	12	42.86%	16	57.14%	28
71184 Facilities Management - Grad	5	27.78%	13	72.22%	18
73102 Construction Engineering Tech	8	13.33%	52	86.67%	60
73401 Electronic Engineering Tech	4	12.90%	27	87.10%	31
<b>Total</b>	<b>62</b>	<b>27.19%</b>	<b>166</b>	<b>72.81%</b>	<b>228</b>

## School of Business and Industry

	Female		Male		Total
	#	%	#	%	#
51100 Pre-Accounting	35	57.38%	26	42.62%	61
51101 Accounting	39	60.00%	26	40.00%	65
52101 Business Administration	130	52.21%	119	47.79%	249
52102 Management	7	43.75%	9	56.25%	16
52106 Facilities Management	15	31.91%	32	68.09%	47
52181 Business Administration-1 Year MBA	46	56.10%	36	43.90%	82
52182 Business Administration Five-Year MBA	10	66.67%	5	33.33%	15
53101 Pre-Business	200	51.41%	189	48.59%	389
55201 Economics	10	24.39%	31	75.61%	41
<b>Total</b>	<b>492</b>	<b>50.98%</b>	<b>473</b>	<b>49.02%</b>	<b>965</b>

## School of Journalism and Graphic Communication

	Female		Male		Total
	#	%	#	%	#
60100 Pre-Journalism	148	71.50%	59	28.50%	207
61102 Magazine Production	3	100.0%	0	0.00%	3
61103 Broadcast Journalism	105	69.08%	47	30.92%	152
61104 Public Relations	103	73.57%	37	26.43%	140
62104 Graphic Design	28	34.57%	53	65.43%	81
<b>Total</b>	<b>387</b>	<b>66.38%</b>	<b>196</b>	<b>33.62%</b>	<b>583</b>





# Student Enrollment by School/College/Major/Gender Fall 2015

## School of Nursing

	Female		Male		Total
	#	%	#	%	#
D0100 Pre-Nursing	331	90.93%	33	9.07%	364
D1101 Nursing	131	90.34%	14	9.66%	145
D1181 Nursing Grad	12	100.0%	0	0.00%	12
<b>Total</b>	<b>474</b>	<b>90.98%</b>	<b>47</b>	<b>9.02%</b>	<b>521</b>

## School of the Environment

	Female		Male		Total
	#	%	#	%	#
01101 Environ Sciences	16	50.00%	16	50.00%	32
01102 Environmental Studies	2	33.33%	4	66.67%	6
01181 Environmental Science	6	66.67%	3	33.33%	9
01191 Environmental Science Doctoral	12	63.16%	7	36.84%	19
<b>Total</b>	<b>36</b>	<b>54.55%</b>	<b>30</b>	<b>45.45%</b>	<b>66</b>

## Unidentified

	Female		Male		Total
	#	%	#	%	#
81101 General Studies - TRIO	4	100.0%	0	0.00%	4
81201 CeDAR	0	0.00%	2	100.0%	2
81301 Undecided	75	52.45%	68	47.55%	143
81302 Freshman Studies	114	64.41%	63	35.59%	177
91101 Unclassified Undergrad	11	50.00%	11	50.00%	22
91181 Unclassified Graduate	34	72.34%	13	27.66%	47
911E1 NON-DEGREE TRANSIENT LAW FT	4	66.67%	2	33.33%	6
911E2 NON-DEGREE TRANSIENT LAW PT	0	0.00%	1	100.0%	1
94401 High School Dual Enrolled	173	57.67%	127	42.33%	300
95501 Community College Dual Enroll	1	14.29%	6	85.71%	7
97701 FAMU-FSU Cooperative Program	26	38.24%	42	61.76%	68
99901 Int'l Exchange Program-UG	3	21.43%	11	78.57%	14
<b>Total</b>	<b>445</b>	<b>56.26%</b>	<b>346</b>	<b>43.74%</b>	<b>791</b>

## Grand Total

	Female		Male		Total
	#	%	#	%	#
<b>Total</b>	<b>6,297</b>	<b>63.48%</b>	<b>3,623</b>	<b>36.52%</b>	<b>9,920</b>



## Student Enrollment by Ethnic Origin Fall 2011 through Fall 2015

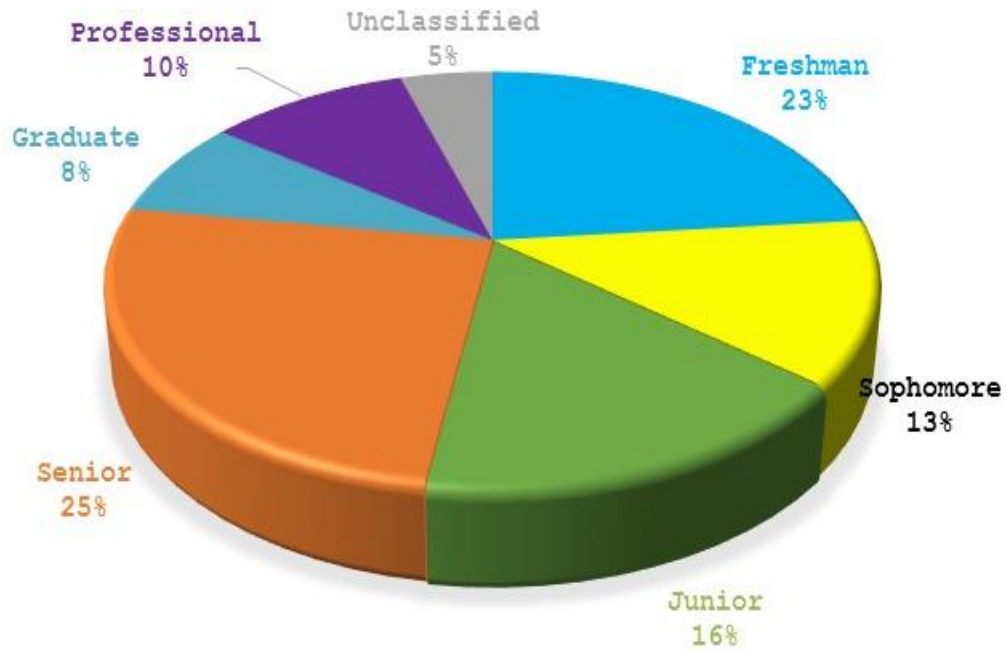
	Non Resident Alien	Hispanic	American Indian	Asian	Black	White	Multiple Races	Total
Fall 2011	118	233	30	140	12,080	593	13	13,207
Fall 2012	130	228	25	119	10,935	603	11	12,051
Fall 2013	136	214	25	117	9,711	525	10	10,738
Fall 2014	142	244	24	122	8,953	739	9	10,233
Fall 2015	125	276	23	103	8,455	747	191	9,920

## Student Enrollment by Residency Fall 2011 through Fall 2015

	In State				Out of State				Total
	Undergraduate	Graduate	Unclassi-fied	Total	Undergraduate	Graduate	Unclassi-fied	Total	
Fall 2011	9,448	1,673	158	11,279	1,574	336	18	1,928	13,207
Fall 2012	8,542	1,685	135	10,362	1,386	291	12	1,689	12,051
Fall 2013	7,652	1,537	129	9,318	1,167	242	11	1,420	10,738
Fall 2014	6,991	1,433	523	8,947	1,012	265	9	1,286	10,233
Fall 2015	6,747	1,477	436	8,660	958	277	25	1,260	9,920



# Student Enrollment by Institutional Classification Fall 2015

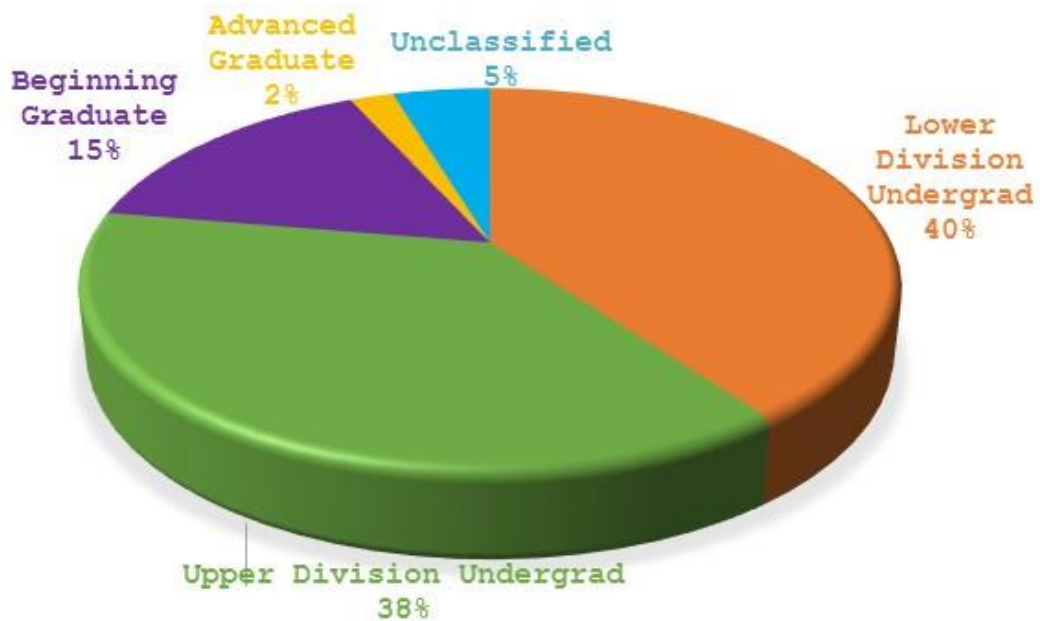


Institutional Classification Level	Fall 2011	Fall 2012	Fall 2013	Fall 2014	Fall 2015
Freshman	3,778	2,508	1,858	1,967	2,322
Sophomore	2,047	2,219	1,810	1,404	1,258
Junior	1,963	1,985	2,080	1,930	1,613
Senior	2,614	2,621	2,535	2,674	2,502
Graduate	981	855	768	753	766
Professional	1,648	1,716	1,547	973	998
Unclassified	176	147	140	532	461
<b>Total</b>	<b>13,207</b>	<b>12,051</b>	<b>10,738</b>	<b>10,233</b>	<b>9,920</b>

Note: Institutional Classification Level is the categorization of the student's progress, as defined by the institution, at the beginning of the term toward a specific degree program, as anticipated after all transcript evaluation and transfer hours are posted.



# Student Enrollment by Student Classification Fall 2015



Student Classification Level	Fall 2011	Fall 2012	Fall 2013	Fall 2014	Fall 2015
Lower Division Undergrad	8,258	5,840	4,607	3,373	3,966
Upper Division Undergrad	2,764	4,088	4,212	4,630	3,739
Beginning Graduate	1,897	1,851	1,644	1,494	1,548
Advanced Graduate	112	125	135	204	206
Unclassified	176	147	140	532	461
<b>Total</b>	<b>13,207</b>	<b>12,051</b>	<b>10,738</b>	<b>10,233</b>	<b>9,920</b>

Note: Student Classification Level is the categorization of the student's progress at the beginning of the term toward a specific degree or certificate as it applies to allocation of resources within the State University System.



## Student Enrollment by County

County	Fall 2011	Fall 2012	Fall 2013	Fall 2014	Fall 2015
Alachua	139	137	109	103	101
Baker	9	9	10	11	10
Bay	70	58	57	51	58
Bradfor	5	9	10	5	3
Brevard	190	165	154	144	117
Broward	1,575	1,429	1,294	1,157	1,094
Calhoun	9	9	10	7	9
Charlot	9	8	5	4	2
Citrus	4	4	4	5	5
Clay	75	76	69	68	67
Collier	31	32	30	24	18
Columbi	30	27	23	22	18
Dade	1,341	1,194	1,053	958	990
Desoto	5	7	7	7	8
Dixie	2	3	3	3	3
Duval	834	763	666	657	677
Escambi	173	143	147	143	138
Flagler	21	24	21	16	18
Frankli	8	5	7	9	7
Gadsden	248	211	187	179	165
Glades	9	8	7	4	1
Gulf	8	8	5	4	4
Hamilto	6	11	7	4	4
Hardee	2	1	0	0	0
Hendry	14	9	9	9	6
Hernand	18	18	16	8	14
Highlan	27	24	21	22	20
Hillsbo	675	604	509	452	444
Holmes	4	3	5	6	5
Indian	28	34	33	24	17
Jackson	48	51	55	40	38
Jeffers	70	64	45	45	44
Lafayet	2	0	1	1	0
Lake	95	91	91	74	71

County	Fall 2011	Fall 2012	Fall 2013	Fall 2014	Fall 2015
Lee	75	73	61	58	62
Leon	1,737	1,592	1,467	1,773	1,626
Levy	4	7	7	8	6
Liberty	13	12	11	9	10
Madison	44	39	35	30	30
Manatee	55	48	48	46	49
Marion	90	81	80	67	74
Martin	19	19	22	20	17
Monroe	10	7	9	9	9
Nassau	23	17	16	8	8
Okaloos	46	44	40	36	45
Okeecho	8	6	5	5	5
Orange	880	830	748	698	656
Osceola	92	85	74	68	70
Palm Be	705	642	565	515	493
Pasco	61	66	57	43	41
Pinella	244	239	221	203	196
Polk	288	272	238	233	221
Putnam	16	20	19	15	16
Santa R	27	19	26	34	29
Sarasot	46	38	44	34	39
Seminol	166	137	116	119	127
St. Joh	30	29	28	25	25
St. Luc	112	110	110	92	81
Sumter	21	17	10	16	14
Suwanne	20	17	17	14	10
Taylor	23	30	26	21	19
Union	1	2	1	0	0
Volusia	111	98	94	87	95
Wakulla	40	34	40	33	43
Walton	11	11	12	10	11
Washing	11	13	10	6	10
Non-Florida	2,242	2,009	1,683	1,511	1,470
Non-USA	152	149	128	121	137
<b>Total</b>	<b>13,207</b>	<b>12,051</b>	<b>10,738</b>	<b>10,233</b>	<b>9,920</b>



## Student Enrollment by State

State	Fall 2011	Fall 2012	Fall 2013	Fall 2014	Fall 2015
Alabama	110	95	81	73	74
Alaska	1	0	0	0	0
Arizona	12	7	6	6	4
Arkansas	6	7	5	4	5
California	89	81	69	59	44
Colorado	10	7	7	8	4
Connecticut	3	6	4	4	5
Delaware	8	7	6	4	5
District of Columbia	64	63	54	40	34
Florida	10,797	9,878	8,918	8,590	8,303
Georgia	665	583	492	454	464
Hawaii	3	1	1	1	1
Idaho	1	0	1	1	1
Illinois	163	149	117	104	99
Indiana	38	28	25	22	19
Iowa	3	3	3	1	2
Kansas	8	6	5	6	5
Kentucky	5	7	5	8	6
Louisiana	27	27	28	25	21
Maryland	120	95	83	71	62
Massachusetts	17	11	9	5	5
Michigan	92	91	83	75	71
Minnesota	10	8	9	9	11
Mississippi	31	31	23	17	16

State	Fall 2011	Fall 2012	Fall 2013	Fall 2014	Fall 2015
Missouri	34	29	25	21	22
Montana	0	0	2	0	0
Nebraska	4	2	4	3	2
Nevada	6	5	6	4	5
New Hampshire	0	0	1	1	1
New Jersey	42	32	27	27	30
New York	77	65	47	46	46
North Carolina	64	59	47	43	48
Ohio	52	41	29	28	24
Oklahoma	0	4	2	2	4
Oregon	1	1	1	1	0
Pennsylvania	34	26	23	19	19
Rhode Island	1	1	0	0	0
South Carolina	69	66	53	43	40
South Dakota	0	0	0	0	1
Tennessee	49	50	37	38	38
Texas	116	105	94	87	93
Utah	1	1	2	2	0
Virginia	64	58	48	48	35
Washington	5	7	6	7	8
West Virginia	1	1	0	0	0
Wisconsin	27	32	31	23	19
Unknown	0	0	3	0	0
None	277	275	216	203	224
<b>Total</b>	<b>13,207</b>	<b>12,051</b>	<b>10,738</b>	<b>10,233</b>	<b>9,920</b>



## Student Enrollment by Age Ranges Fall 2011- 2015

Age Range	Fall 2011	Fall 2012	Fall 2013	Fall 2014	Fall 2015
18 and Under	1,372	1,039	837	1,250	1,359
19-21	5,983	5,274	4,468	3,879	3,809
22-24	3,306	3,241	3,244	3,006	2,751
25-30	1,597	1,554	1,368	1,310	1,263
31-40	602	619	549	499	464
41-64	340	319	271	286	272
65 and Over	7	5	1	3	2
<b>Total</b>	<b>13,207</b>	<b>12,051</b>	<b>10,738</b>	<b>10,233</b>	<b>9,920</b>
<b>Average Age</b>	<b>22.7</b>	<b>22.9</b>	<b>23.0</b>	<b>22.9</b>	<b>22.8</b>

## Student Enrollment by Institution's Classification and Age Ranges - Fall 2015

Institutional Classification	Freshman	Sophomore	Junior	Senior	Graduate	Post Professional	Unclassified	Total
18 and Under	1,000	32	19	1	0	0	307	1,359
19-21	1,291	1,095	886	445	7	18	67	3,809
22-24	17	96	524	1,520	223	340	31	2,751
25-30	11	23	121	381	292	409	26	1,263
31-40	0	8	37	91	143	171	14	464
41-64	3	4	26	64	100	59	16	272
65 and Over	0	0	0	0	1	1	0	2
<b>Total</b>	<b>2322</b>	<b>1258</b>	<b>1613</b>	<b>2502</b>	<b>766</b>	<b>998</b>	<b>461</b>	<b>9920</b>





## Student Enrollment by Program Category and Student Level

Program Category	Fall 2013				Fall 2014				Fall 2015			
	Undergraduate	Graduate	Unclassified	Total	Undergraduate	Graduate	Unclassified	Total	Undergraduate	Graduate	Unclassified	Total
000000-	349	1	140	490	225	0	527	752	183	6	458	647
010000-Agriculture, General	161	22	0	183	152	20	0	172	138	21	0	159
010102-Agribusiness/Agricultural Business Operations	48	0	0	48	42	0	0	42	31	0	0	31
030103-Environmental Studies	0	0	0	0	3	0	0	3	6	0	0	6
030104-Environmental Science	19	25	0	44	21	30	0	51	32	28	0	60
040201-Architecture	144	42	0	186	102	49	0	151	91	46	0	137
050201-African-American/Black Studies	17	0	0	17	14	0	5	19	10	0	2	12
090401-Journalism	376	0	0	376	334	0	0	334	362	0	0	362
090902-Public Relations/Image Management	149	0	0	149	133	0	0	133	140	0	0	140
110101-Computer and Information Sciences, General	150	17	0	167	132	15	0	147	124	12	0	136
110103-Information Technology	91	0	0	91	101	0	0	101	119	0	0	119
130301-Curriculum and Instruction	0	0	0	0	0	7	0	7	0	9	0	9
130401-Educational Leadership and Administration, General	0	71	0	71	0	70	0	70	0	72	0	72



## Student Enrollment by Program Category and Student Level (cont)

Program Category	Fall 2013				Fall 2014				Fall 2015			
	Undergraduate	Graduate	Unclassified	Total	Undergraduate	Graduate	Unclassified	Total	Undergraduate	Graduate	Unclassified	Total
131199-Student Counseling and Personnel Services, Other	0	22	0	22	0	19	0	19	0	26	0	26
131202-Elementary Education and Teaching	160	1	0	161	137	0	0	137	106	0	0	106
131210-Early Childhood Education and Teaching	30	0	0	30	30	0	0	30	20	0	0	20
131303-Business Teacher Education	1	0	0	1	0	0	0	0	0	0	0	0
131305-English/Language Arts Teacher Education	16	0	0	16	12	0	0	12	7	0	0	7
131311-Mathematics Teacher Education	24	0	0	24	16	0	0	16	14	0	0	14
131312-Music Teacher Education	53	0	0	53	43	0	0	43	51	0	0	51
131314-Physical Education Teaching and Coaching	54	0	0	54	12	0	0	12	0	0	0	0
131316-Science Teacher Education/General Science Teacher	3	0	0	3	3	0	0	3	1	0	0	1
131317-Social Science Teacher Education	34	0	0	34	47	0	0	47	39	0	0	39
131320-Trade and Industrial Teacher Education	3	0	0	3	1	0	0	1	0	0	0	0
140301-Agricultural Engineering	24	0	0	24	22	0	0	22	19	0	0	19
140501-Bioengineering and Biomedical Engineering	0	0	0	0	0	1	0	1	0	1	0	1



## Student Enrollment by Program Category and Student Level (cont)

Program Category	Fall 2013				Fall 2014				Fall 2015			
	Undergraduate	Graduate	Unclassified	Total	Undergraduate	Graduate	Unclassified	Total	Undergraduate	Graduate	Unclassified	Total
140701-Chemical Engineering	43	1	0	44	48	2	0	50	47	4	0	51
140801-Civil Engineering, General	66	8	0	74	54	6	0	60	48	7	0	55
140901-Computer Engineering, General	57	0	0	57	51	0	0	51	63	0	0	63
141001-Electrical and Electronics Engineering	48	7	0	55	43	8	0	51	46	10	0	56
141901-Mechanical Engineering	85	4	0	89	72	6	0	78	75	8	0	83
143501-Industrial Engineering	22	4	0	26	20	5	0	25	17	7	0	24
150303-Electrical, Electronic and Communications Engineer	49	0	0	49	38	0	0	38	31	0	0	31
151001-Construction Engineering Technology/Technician	61	0	0	61	51	0	0	51	60	0	0	60
220101-Law	0	518	0	518	0	466	0	466	0	461	1	462
230101-English Language and Literature, General	78	0	0	78	69	0	0	69	45	0	0	45
240101-Liberal Arts and Sciences/Liberal Studies	0	0	0	0	135	0	0	135	143	0	0	143
260101-Biology/Biological Sciences, General	705	14	0	719	641	13	0	654	593	9	0	602
260702-Entomology	0	2	0	2	0	2	0	2	0	2	0	2



## Student Enrollment by Program Category and Student Level (cont)

Program Category	Fall 2013				Fall 2014				Fall 2015			
	Undergraduate	Graduate	Unclassified	Total	Undergraduate	Graduate	Unclassified	Total	Undergraduate	Graduate	Unclassified	Total
270101-Mathematics, General	32	0	0	32	32	0	0	32	28	0	0	28
300000-Interdisciplinary Studies	0	0	0	0	38	0	0	38	219	0	0	219
310501-Health, Physical Education/Fitness	0	0	0	0	32	0	0	32	60	0	0	60
310504-Sport Business Management	0	13	0	13	0	14	0	14	0	14	0	14
389999-Philosophy and Religious Studies, Other	22	0	0	22	18	0	0	18	14	0	0	14
400501-Chemistry, General	90	7	0	97	80	4	0	84	88	6	0	94
400801-Physics, General	17	7	0	24	12	8	0	20	9	11	0	20
420101-Psychology, General	417	0	0	417	380	0	0	380	345	0	0	345
422802-Community Psychology	0	35	0	35	0	29	0	29	0	34	0	34
430104-Criminal Justice/Safety Studies	698	0	0	698	529	0	0	529	479	0	0	479
440701-Social Work	264	46	0	310	206	47	0	253	185	39	0	224
450101-Social Sciences, General	0	84	0	84	0	77	0	77	0	66	0	66
450601-Economics, General	48	0	0	48	45	0	0	45	41	0	0	41



## Student Enrollment by Program Category and Student Level (cont)

Program Category	Fall 2013				Fall 2014				Fall 2015			
	Undergraduate	Graduate	Unclassified	Total	Undergraduate	Graduate	Unclassified	Total	Undergraduate	Graduate	Unclassified	Total
451001-Political Science and Government, General	241	0	0	241	205	0	0	205	188	0	0	188
451101-Sociology	132	0	0	132	113	0	0	113	88	0	0	88
500409-Graphic Design	122	0	0	122	91	0	0	91	81	0	0	81
500499-Design and Applied Arts, Other	1	0	0	1	0	0	0	0	0	0	0	0
500501-Drama and Dramatics/Theatre Arts, General	59	0	0	59	59	0	0	59	62	0	0	62
500702-Fine/Studio Arts, General	20	0	0	20	24	0	0	24	22	0	0	22
500901-Music, General	86	0	0	86	94	0	0	94	96	0	0	96
510000-Health Services/Allied Health/Health Sciences,	747	0	0	747	763	0	0	763	733	0	0	733
510701-Health/Health Care Administration/Manageme	301	16	0	317	277	13	0	290	247	13	0	260
510706-Health Information/Medical Records Administration/	119	0	0	119	100	0	0	100	75	0	0	75
510908-Respiratory Care Therapy/Therapist	108	0	0	108	96	0	0	96	93	0	0	93
512001-Pharmacy	536	366	0	902	549	382	0	931	522	441	0	963
512099-Pharmacy, Pharmaceutical Sciences, and Administrat	0	44	0	44	0	38	0	38	0	45	0	45



## Student Enrollment by Program Category and Student Level (cont)

Program Category	Fall 2013				Fall 2014				Fall 2015			
	Undergraduate	Graduate	Unclassified	Total	Undergraduate	Graduate	Unclassified	Total	Undergraduate	Graduate	Unclassified	Total
512201-Public Health, General	0	83	0	83	0	93	0	93	0	102	0	102
512306-Occupational Therapy/Therapist	0	63	0	63	0	62	0	62	0	59	0	59
512308-Physical Therapy/Therapist	0	117	0	117	0	98	0	98	0	86	0	86
513801-Registered Nursing/Registered Nurse	544	20	0	564	499	13	0	512	509	12	0	521
520201-Business Administration and Management, General	859	119	0	978	747	101	0	848	701	97	0	798
520301-Accounting	180	0	0	180	171	0	0	171	126	0	0	126
540101-History, General	56	0	0	56	39	0	0	39	33	0	0	33
<b>Total</b>	<b>8,819</b>	<b>1,779</b>	<b>140</b>	<b>10,738</b>	<b>8,003</b>	<b>1,698</b>	<b>532</b>	<b>10,233</b>	<b>7,705</b>	<b>1,754</b>	<b>461</b>	<b>9,920</b>



# Student Enrollment by Term and by Institutional Classification 2011-12 through 2015-16

	2011-12			2012-13			2013-14			2014-15			2015-16		
	Summer 2011	Fall 2011	Spring 2012	Summer 2012	Fall 2012	Spring 2013	Summer 2013	Fall 2013	Spring 2014	Summer 2014	Fall 2014	Spring 2015	Summer 2015	Fall 2015	Spring 2016
<b>Freshman</b>	1,071	3,778	2,382	693	2,508	1,605	545	1,858	1,314	549	1,967	1,436	594	2,322	1,591
<b>Sophomore</b>	699	2,047	2,317	711	2,219	2,062	621	1,810	1,579	514	1,404	1,192	399	1,258	1,445
<b>Junior</b>	892	1,963	2,017	868	1,985	2,154	1,042	2,080	2,059	890	1,930	1,811	777	1,613	1,440
<b>Senior</b>	1,473	2,614	2,784	1,506	2,621	2,719	1,586	2,535	2,955	1,753	2,674	2,702	1,703	2,502	2,408
<b>Graduate</b>	541	981	853	507	855	832	488	768	730	472	753	753	500	766	735
<b>First Professional</b>	665	1,648	1,669	743	1,716	1,621	688	1,547	939	507	973	1,035	488	998	1,057
<b>Unclassified</b>	27	176	153	32	147	118	42	140	148	78	532	521	53	461	422
<b>Total</b>	<b>5,368</b>	<b>13,207</b>	<b>12,175</b>	<b>5,060</b>	<b>12,051</b>	<b>11,111</b>	<b>5,012</b>	<b>10,738</b>	<b>9,724</b>	<b>4,763</b>	<b>10,233</b>	<b>9,450</b>	<b>4,514</b>	<b>9,920</b>	<b>9,098</b>





## Student Enrollment by Semester and by Student Classification 2011-12 through 2015-16

	2011-12			2012-13			2013-14			2014-15			2015-16		
	Summer 2011	Fall 2011	Spring 2012	Summer 2012	Fall 2012	Spring 2013	Summer 2013	Fall 2013	Spring 2014	Summer 2014	Fall 2014	Spring 2015	Summer 2015	Fall 2015	Spring 2016
<b>Lower Division Undergrad</b>	2,656	8,258	5,772	1,916	5,840	4,685	1,685	4,607	3,518	1,455	3,373	2,629	993	3,966	3,038
<b>Upper Division Undergrad</b>	1,698	2,764	4,318	2,078	4,088	4,420	2,286	4,212	4,396	2,293	4,630	4,652	2,517	3,739	3,958
<b>Beginning Graduate</b>	907	1,897	1,796	941	1,851	1,767	904	1,644	1,533	756	1,494	1,439	768	1,548	1,478
<b>Advanced Graduate</b>	80	112	136	93	125	121	95	135	129	181	204	209	183	206	202
<b>Unclassified</b>	27	176	153	32	147	118	42	140	148	78	532	521	53	461	422
<b>Total</b>	<b>5,368</b>	<b>13,207</b>	<b>12,175</b>	<b>5,060</b>	<b>12,051</b>	<b>11,111</b>	<b>5,012</b>	<b>10,738</b>	<b>9,724</b>	<b>4,763</b>	<b>10,233</b>	<b>9,450</b>	<b>4,514</b>	<b>9,920</b>	<b>9,098</b>

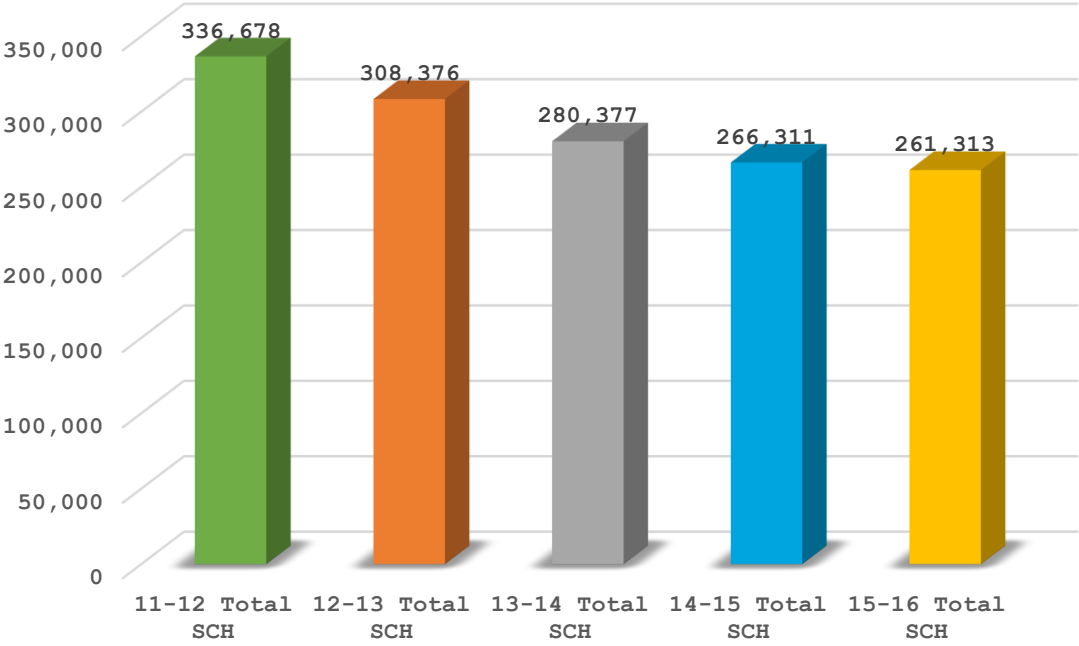


## Full-time vs. Part-time Students by School/College, by Level Fall 2015

School	Undergraduate			Graduate			Unclassified			Total
	Full-Time	Part-Time	All	Full-Time	Part-Time	All	Full-Time	Part-Time	All	
College of Agriculture and Food Sciences	162	26	188	14	9	23	0	0	0	211
College of Education	277	18	295	67	54	121	0	0	0	416
College of Engineering	266	30	296	32	5	37	0	0	0	333
College of Law	0	0	0	437	24	461	0	0	0	461
College of Pharmacy and Pharmaceutical Sciences	498	24	522	560	28	588	0	0	0	1,110
College of Science and Technology	846	115	961	24	14	38	0	0	0	999
College of Social Sciences, Arts and Humanities	1,578	211	1,789	74	65	139	1	1	2	1,930
School of Allied Health Sciences	1,026	122	1,148	154	4	158	0	0	0	1,306
School of Architecture	159	23	182	34	12	46	0	0	0	228
School of Business and Industry	784	84	868	73	24	97	0	0	0	965
School of Journalism and Graphic Communication	521	62	583	0	0	0	0	0	0	583
School of Nursing	477	32	509	12	0	12	0	0	0	521
School of the Environment	35	3	38	22	6	28	0	0	0	66
Unidentified	307	19	326	4	2	6	30	429	459	791
<b>Total</b>	<b>6,936</b>	<b>769</b>	<b>7,705</b>	<b>1,507</b>	<b>247</b>	<b>1,754</b>	<b>31</b>	<b>430</b>	<b>461</b>	<b>9,920</b>



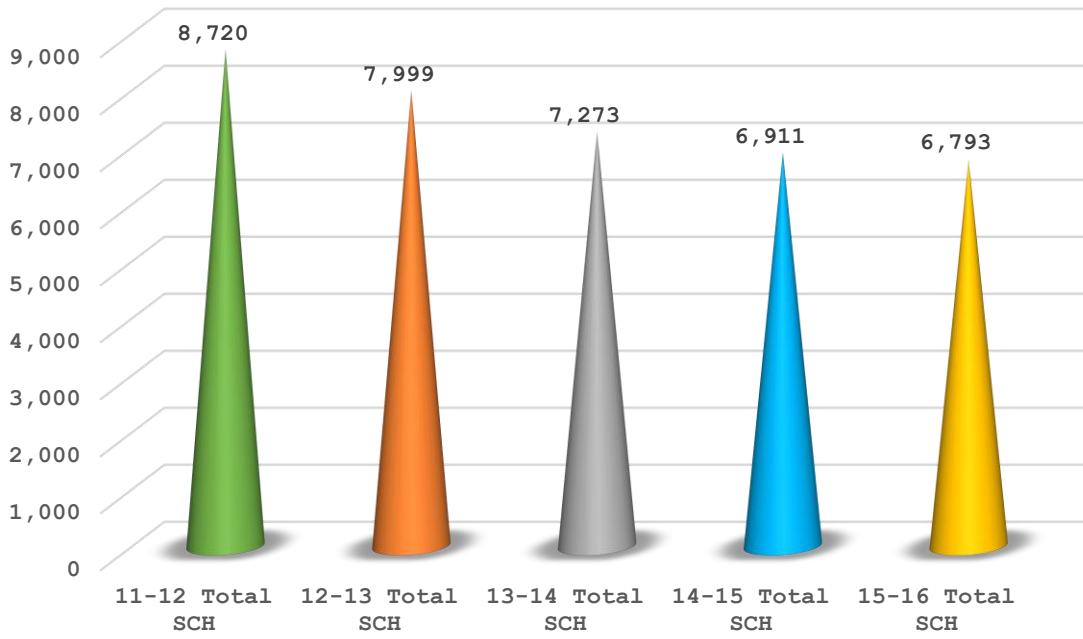
# Student Fundable Credit Hours Generated by Level 2011-12 through 2015-16



Leve	11-12 Total SCH	12-13 Total SCH	13-14 Total SCH	14-15 Total SCH	15-16 Total SCH
Remedial	5,532	3,561	2,526	3,054	3,183
Lower	162,652	140,872	122,270	112,890	115,408
<b>Total Lower</b>	<b>168,184</b>	<b>144,433</b>	<b>124,796</b>	<b>115,944</b>	<b>118,591</b>
Upper	119,945	117,665	113,436	109,855	101,157
Graduate I	15,991	13,268	12,021	11,651	11,615
Graduate II	32,558	33,010	30,124	28,861	29,950
<b>Total Graduate</b>	<b>48,549</b>	<b>46,278</b>	<b>42,145</b>	<b>40,512</b>	<b>41,565</b>
<b>Grand Total</b>	<b>336,678</b>	<b>308,376</b>	<b>280,377</b>	<b>266,311</b>	<b>261,313</b>



# Annual Fundable Full-Time Equivalency (FTE) 2011-12 through 2015-16



Leve	11-12 Total SCH	12-13 Total SCH	13-14 Total SCH	14-15 Total SCH	15-16 Total SCH
Remedial	138	89	63	76	80
Lower	4,066	3,522	3,057	2,822	2,885
<b>Total Lower</b>	<b>4,205</b>	<b>3,611</b>	<b>3,120</b>	<b>2,899</b>	<b>2,965</b>
Upper	2,999	2,942	2,836	2,746	2,529
Graduate I	500	415	376	364	363
Graduate II	1,017	1,032	941	902	936
<b>Total Graduate</b>	<b>1,517</b>	<b>1,446</b>	<b>1,317</b>	<b>1,266</b>	<b>1,299</b>
<b>Grand Total</b>	<b>8,720</b>	<b>7,999</b>	<b>7,273</b>	<b>6,911</b>	<b>6,793</b>



# FTIC Graduation and Retention Rates 2001 – 2014

		2001	2002	2003	2004	2005	2006	2007	2008	2009	2010	2011	2012	2013	2014
1st Year	Total # Enrolled	2396	2284	2565	2261	1681	1642	1869	2124	2382	2751	2013	1519	1294	1405
	Total # Graduated	3	0	1	0	1	0	0	1	0	0	1	0	0	0
	% Graduated	0.13%	0.00%	0.04%	0.00%	0.06%	0.00%	0.00%	0.05%	0.00%	0.00%	0.05%	0.00%	0.00%	0.00%
	Total # Retained	2396	2284	2565	2261	1681	1642	1869	2124	2382	2751	2013	1519	1294	1405
	% Retained	99.96%	100.00%	100.00%	100.00%	100.00%	100.00%	100.00%	100.00%	100.00%	100.00%	100.00%	100.00%	100.00%	100.00%
2nd Year	Total # Enrolled	2017	1944	2166	1827	1375	1370	1592	1704	1980	2221	1640	1256	1062	
	Total # Graduated	6	2	3	2	4	0	1	2	1	0	3	1	0	
	% Graduated	0.25%	0.09%	0.12%	0.09%	0.24%	0.00%	0.05%	0.09%	0.04%	0.00%	0.15%	0.07%	0.00%	
	Total # Retained	2020	1944	2167	1827	1376	1370	1592	1705	1980	2221	1641	1256	1062	
	% Retained	84.27%	85.11%	84.48%	80.81%	81.86%	83.44%	85.18%	80.27%	83.12%	80.73%	81.52%	82.69%	82.07%	
3rd Year	Total # Enrolled	1752	1701	1862	1613	1180	1168	1367	1467	1631	1739	1350	1037		
	Total # Graduated	22	22	17	17	12	5	4	9	11	10	10	10		
	% Graduated	0.92%	0.96%	0.66%	0.75%	0.71%	0.31%	0.21%	0.42%	0.46%	0.36%	0.50%	0.66%		
	Total # Retained	1758	1703	1865	1615	1184	1168	1368	1469	1632	1739	1353	1038		
	% Retained	73.34%	74.56%	72.71%	71.43%	70.43%	71.13%	73.19%	69.16%	68.51%	63.21%	67.21%	68.33%		
4th Year	Total # Enrolled	1516	1532	1662	1437	1065	1018	1227	1280	1367	1492	1198			
	Total # Graduated	346	282	298	270	186	157	217	255	268	331	270			
	% Graduated	14.44%	12.35%	11.62%	11.94%	11.07%	9.56%	11.61%	12.01%	11.25%	12.03%	13.41%			
	Total # Retained	1538	1554	1679	1454	1077	1023	1231	1289	1378	1502	1208			
	% Retained	64.16%	68.04%	65.46%	64.31%	64.07%	62.30%	65.86%	60.69%	57.85%	54.60%	60.01%			
5th Year	Total # Enrolled	1058	1161	1231	1050	811	810	929	896	982	1040				
	Total # Graduated	679	635	699	672	450	428	545	607	660	806				
	% Graduated	28.33%	27.80%	27.25%	29.72%	26.77%	26.07%	29.16%	28.58%	27.71%	29.30%				
	Total # Retained	1404	1443	1529	1320	997	967	1146	1151	1250	1371				
	% Retained	58.57%	63.18%	59.61%	58.38%	59.31%	58.89%	61.32%	54.19%	52.48%	49.84%				
6th Year	Total # Enrolled	592	663	724	554	464	478	504	466	478					
	Total # Graduated	918	932	1027	926	664	647	762	830	915					
	% Graduated	38.30%	40.81%	40.04%	40.96%	39.50%	39.40%	40.77%	39.08%	38.41%					
	Total # Retained	1271	1298	1423	1226	914	906	1049	1073	1138					
	% Retained	53.03%	56.83%	55.48%	54.22%	54.37%	55.18%	56.13%	50.52%	47.78%					
7th Year	Total # Enrolled	268	301	316	255	214	217	225	177						
	Total # Graduated	1025	1054	1164	1035	749	747	861	915						
	% Graduated	42.76%	46.15%	45.38%	45.78%	44.56%	45.49%	46.07%	43.08%						
	Total # Retained	1186	1233	1343	1181	878	864	987	1007						
	% Retained	49.48%	53.98%	52.36%	52.23%	52.23%	52.62%	52.81%	47.41%						
8th Year	Total # Enrolled	137	137	158	120	114	88	106							
	Total # Graduated	1067	1108	1213	1088	796	787	918							
	% Graduated	44.51%	48.51%	47.29%	48.12%	47.35%	47.93%	49.12%							
	Total # Retained	1162	1191	1322	1155	863	835	967							
	% Retained	48.48%	52.15%	51.54%	51.08%	51.34%	50.85%	51.74%							
9th Year	Total # Enrolled	71	79	100	58	51	41								
	Total # Graduated	1087	1140	1248	1118	819	809								
	% Graduated	45.35%	49.91%	48.66%	49.45%	48.72%	49.27%								
	Total # Retained	1138	1187	1313	1146	847	828								
	% Retained	47.48%	51.97%	51.19%	50.69%	50.39%	50.43%								
10th Year	Total # Enrolled	41	41	53	28	27									
	Total # Graduated	1096	1153	1268	1132	833									
	% Graduated	45.72%	50.48%	49.44%	50.07%	49.55%									
	Total # Retained	1128	1181	1301	1146	846									
	% Retained	47.06%	51.71%	50.72%	50.69%	50.33%									

