

# Licensure Pass Rate Improvement Plan Updates

Bachelor of Nursing (BSN) Program

Doctor of Physical Therapy (DPT) Program

Doctor of Pharmacy (PharmD) Program

FAMU Board of Trustees  
Academic and Student Affairs Committee Meeting  
December 1, 2021



## **Focus**

- Updates on Progress to Achieve and Sustain Academic Excellence in FAMU's Health Professions Programs
- Timely Updates (Licensure Exam Scores, Accreditation Actions, etc.)

## **Today's Meeting**

Overview of institutional strategy and approaches for improving student success outcomes

- Pre-Enrollment
- Student Preparation for Program Entry
- Program Matricualtion

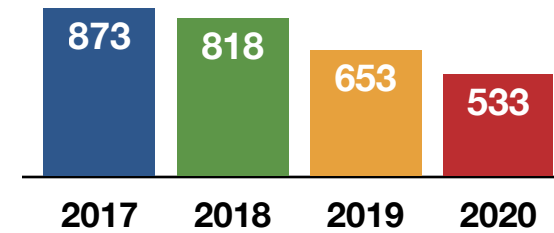
## Student Recruitment and Enrollment

- Lacking dedicated staffing for recruitment
- Enrollment declines in Pharmacy and Nursing
- Need to increase academic profile of entering cohorts
- Source of students:
  - PharmD: 52% from FAMU
  - BSN: 80% from FAMU
  - DPT: 28% from FAMU

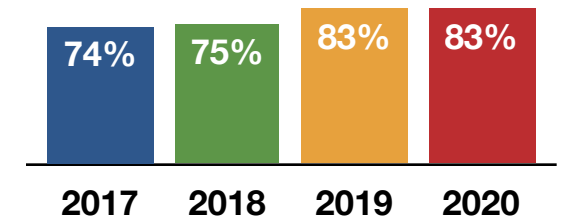
## Student Success

- Sustained compliance with accreditation standards
- First-time licensure pass rates lag behind SUS peers

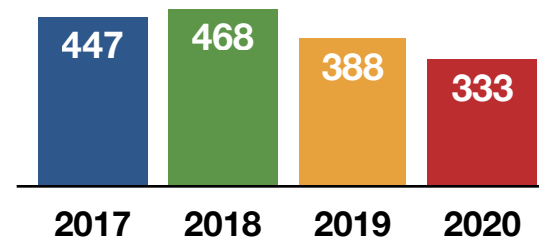
### PharmD Enrollment



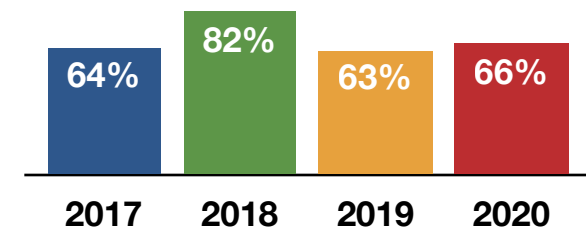
### PharmD Pass Rates



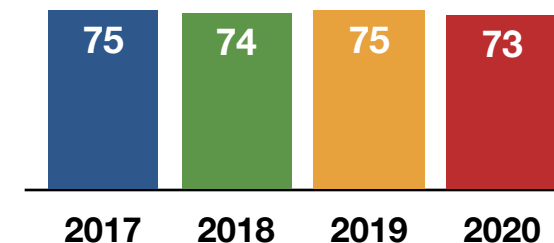
### BSN Enrollment



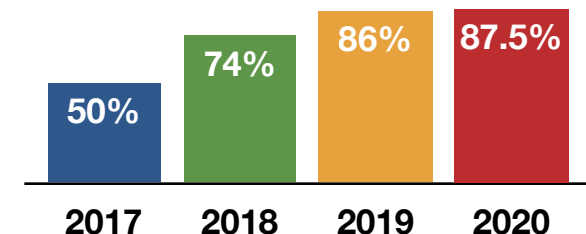
### BSN Pass Rates



### DPT Enrollment



### DPT Pass Rates



## Pre-Enrollment

Outreach  
Recruitment

## Student Preparation for Program Entry

Admissions  
Student Engagement and Development  
Collaboration with STEM Programs

## Program Matriculation

Targeted Initiatives  
Faculty Development



## Health Professions Recruitment Team

- Coordinated, holistic recruiting approach for the health professions programs
- Established fall 2021
- 5 full-time FTE
- Currently advertising to fill new positions (anticipated spring 2022 start dates)
- Managed through the Office of the Provost



## Key Strategies

- Targeted K-12 and AA transfer student outreach and recruitment
- Early and ongoing engagement with FAMU undergraduates
- Expansion of curricular and co-curricular activities for student development
- Expanded marketing and PR (digital, print, social media, etc.)
- Increased presence at recruiting events and showcasing of academic program offerings

## Health Professions Recruitment Team

### Targeted Programs

Pharmacy	Health Sciences
Nursing	Cardiopulmonary Science
Physical Therapy	Healthcare Management
Occupational Therapy	Public Health

### ROI and Measures of Success

- Increased academic profiles of entering cohorts
- Higher licensure exam first-time passage rates
- Increased enrollment and degree production
- Increased capacity to address Florida's workforce and community needs
- Increased awareness of the "FAMU Health" brand
- Increase in program rankings and enhanced reputation



## Admissions

- Raise admission criteria
- Use diagnostic tools to evaluate applicants
- Identify deficiencies for remediation

### Nursing

#### Implemented TEAS in Spring 2021

- Used as diagnostic for incoming students to assess readiness

#### Increased Minimum GPA Requirements

- Average GPA in majority of science and math courses show increases for Fall 2021 cohort

#### GPA of Admits

	Fall 2020	Spr 2021	Fall 2021
Pre-Req	3.46	3.45	3.59
Chemistry GPA	2.88	3.19	3.61
A&P I Lecture	3.65	3.65	3.36

### Pharmacy

#### Implemented PharmCAS in 2019-20

- Applications have increased from 226 to 405 over the past two years

#### Increased Minimum GPA Requirements

- Fall 2021 admits have highest overall GPA, Science GPA, and Math GPA over the past six years

#### GPA of Admits

	Fall 2019	Fall 2020	Fall 2021
Math GPA	3.11	3.13	3.37
Science GPA	3.18	3.19	3.24
Overall GPA	3.23	3.23	3.31

### Physical Therapy

#### Established Minimum GRE and GPA Requirements

- Fall 2021 admits exceed minimum GRE and GPA (last 60 hrs) targets

#### GPA of Admits

	Fall 2019	Fall 2020	Fall 2021
GRE Quant.	151	151	151
GPA - cum.	3.43	3.49	3.38
GPA - last 60 hr	3.49	3.51	3.51

## Student Engagement and Development

- Peer mentoring
- Targeted academic support
- Accelerated remediation
- Professional development
- Collaboration with STEM feeder programs
  - Exploring offering special sections of foundational math, chemistry, physics and biology courses



### Nursing

#### **Pre-Nursing Course (zero credit)**

- Target freshman and sophomore pre-nursing students
- Foundational skills and socialization to nursing education

#### **Living Learning Community (LLC)**

- 28 participants in 2020
- 92% with GPA>3.0; 53% with GPA >3.5

### Pharmacy

#### **Math Boot Camp**

- Scheduled for Summer 2022 (prior to matriculation into pre-pharmacy program)
- 25 participants

### Physical Therapy

#### **Senior Level Capstone Project**

- Clinical shadowing
- Assistance with submission of DPT program application

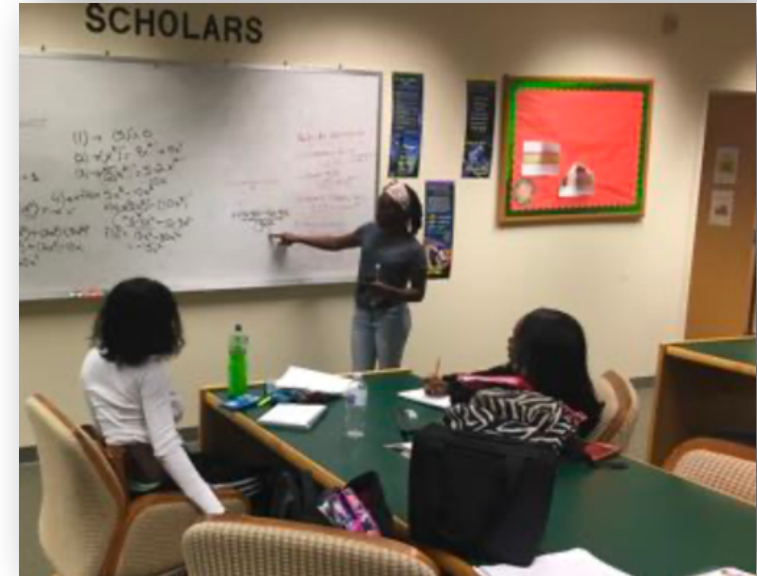
#### **Curriculum Enhancements**

- Integration of GRE Prep-STEP registration and practice within curriculum
- Implement Applied Kinetic Anatomy course



## Targeted Initiatives

- Short-term efforts to assist students with licensure exam preparation
- Faculty-focused initiatives to enhance student instruction and training



### Nursing

#### End-of-Program Living Learning Initiative

- Intensive NCLEX prep for graduates immediately prior to sitting for the exam

#### Intrusive Remediation

- Coaches and RN Remediation Specialists

### Pharmacy

#### Joint NAPLEX Preparation Elective Course

- Students from FAMU, TSU and CSU

#### Faculty Development

- Funding for Eminent Scholars to assist math and chemistry faculty with pedagogy to enhance foundational learning and knowledge retention

### Physical Therapy

#### External Partnerships (Upstream Rehab)

- Case-based review of clinical content facilitated by clinicians who are American Orthopedic Manual PT Fellows

#### Faculty Development

- Enhanced pedagogy through use of active learning instructional strategies by all DPT faculty

# Questions?



## FLORIDA A&M UNIVERSITY

Founded in 1887 as the State Normal College for Colored Students, Florida Agricultural and Mechanical University (FAMU) is the only historically state supported educational facility for African Americans in Florida. It has always been co-educational. In 1890, the second Morrill Act was passed. This enabled the school to become the Black Land Grant College for the State of Florida. west of its original location